

HUNTERS[®]

HERE TO GET *you* THERE



Ada Road

London, SE5 7RW

£2,200



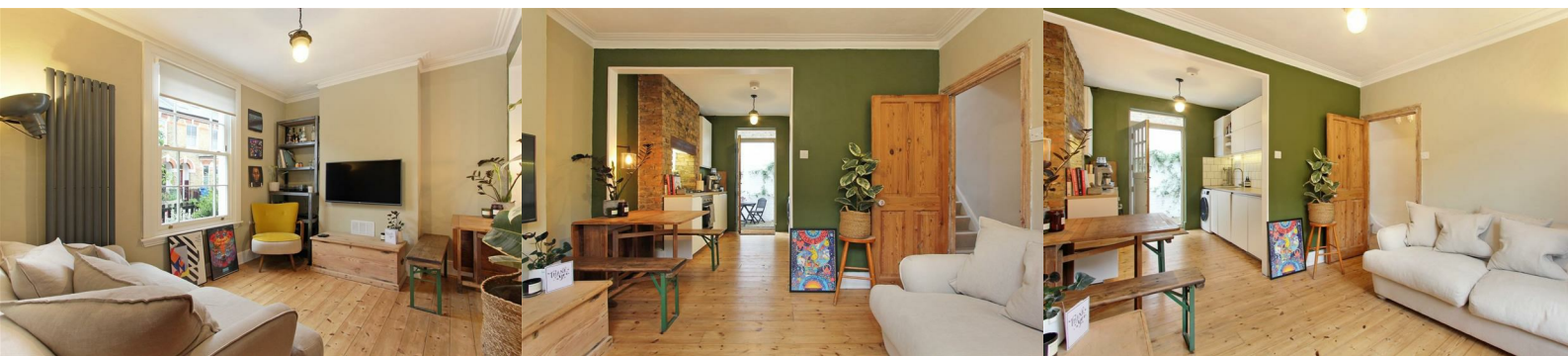
Beautiful two double bedroom Victorian terraced house set in a quiet residential road in the heart of Zone 2 central London.

This well proportioned characterful property is arranged over two floors and benefits from a spacious separate reception and dining area with gorgeous stripped wooden floors, modern fitted kitchen that leads out to a private rear patio garden.

There is a modern contemporary bathroom with walk in shower and two good sized double bedrooms with plenty of storage.

This wonderful house is minutes from excellent transport links with easy access to the West End & City and a vast range of bars restaurants and local amenities that this vibrant area has to offer.

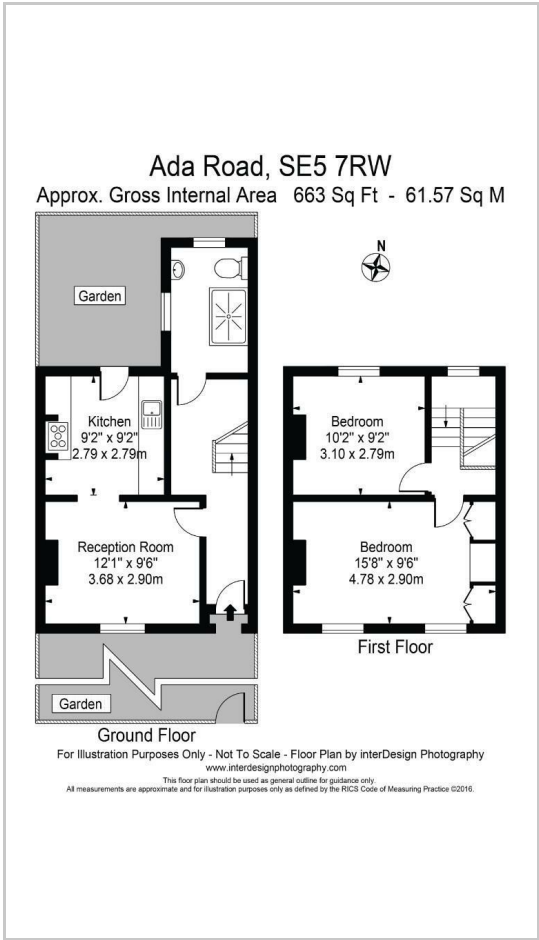
Brunswick Park with its tennis courts and manicured gardens is a short walk away.



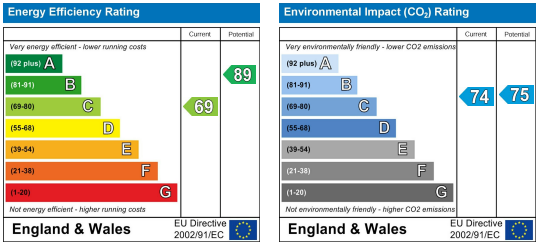
Area Map



Floor Plans



Energy Efficiency Graph



These particulars are intended to give a fair and reliable description of the property but no responsibility for any inaccuracy or error can be accepted and do not constitute an offer or contract. We have not tested any services or appliances (including central heating if fitted) referred to in these particulars and the purchasers are advised to satisfy themselves as to the working order and condition. If a property is unoccupied at any time there may be reconnection charges for any switched off/disconnected or drained services or appliances - All measurements are approximate.

THINKING OF SELLING? If you are thinking of selling your home or just curious to discover the value of your property, Hunters would be pleased to provide free, no obligation sales and marketing advice. Even if your home is outside the area covered by our local offices we can arrange a Market Appraisal through our national network of Hunters estate agents.